



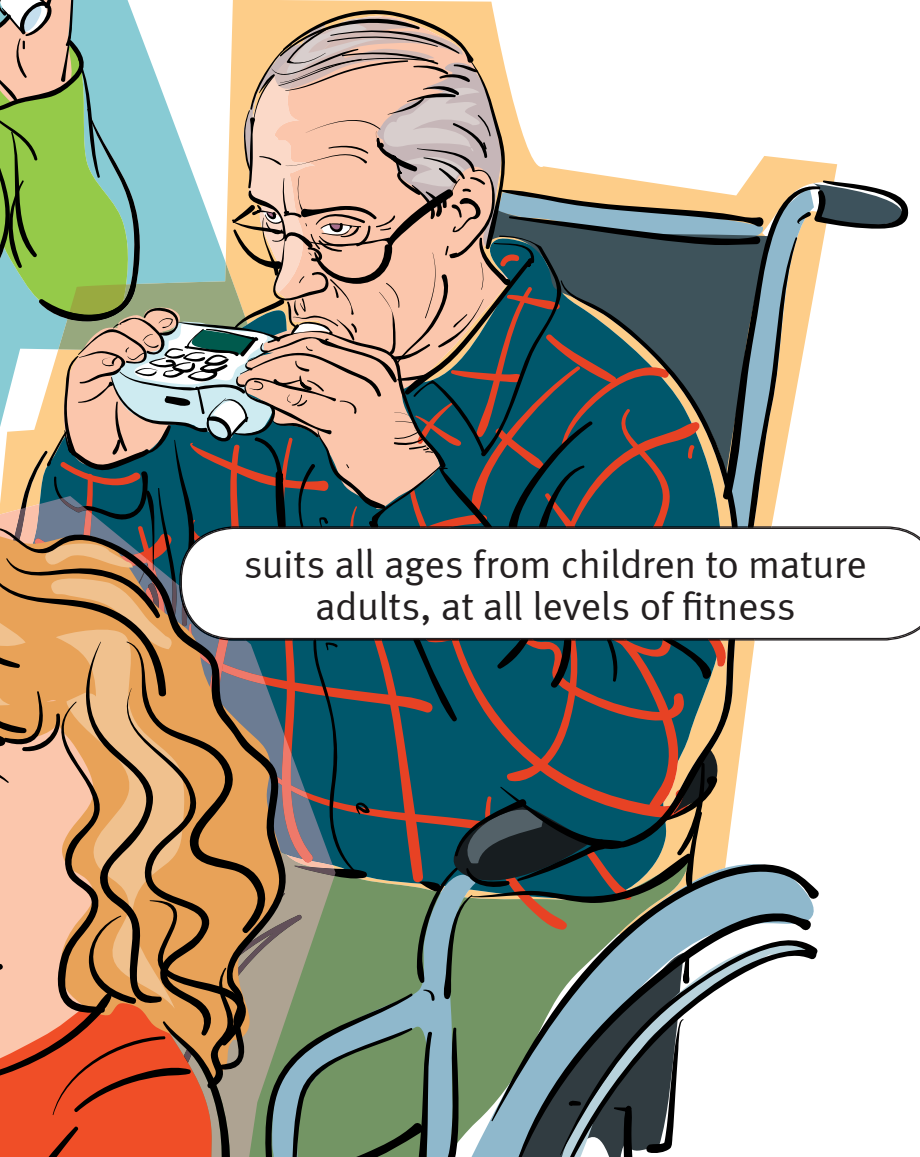
spirette™

The new standard in spirometry

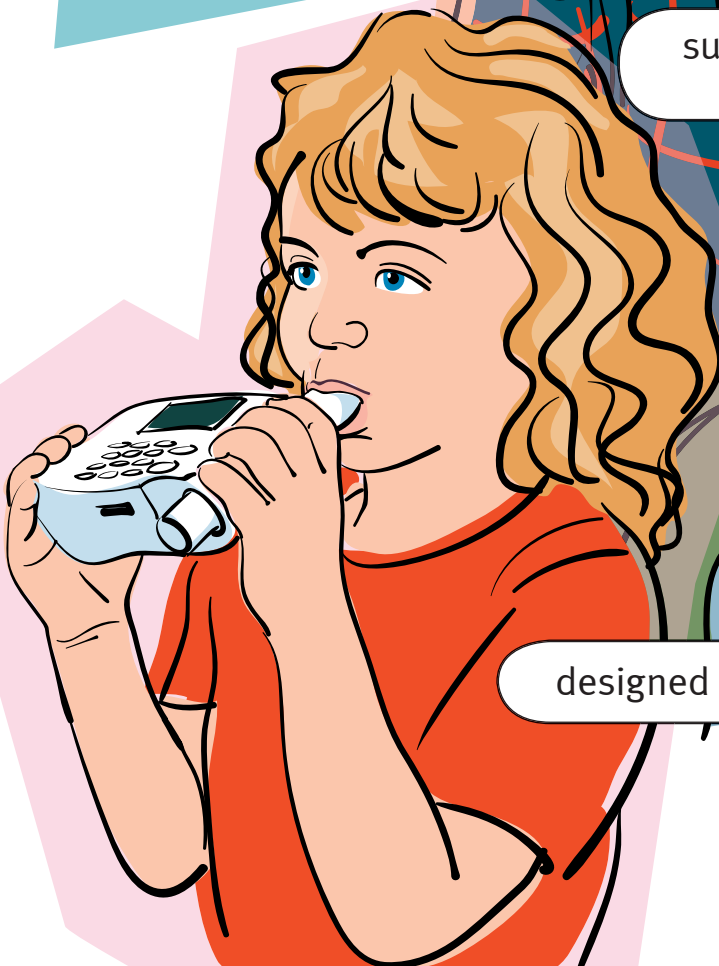
- No sensor
- No calibration (ever)
- No additional filters
- No cleaning
- No maintenance



ensures a tight seal
around the lips



suits all ages from children to mature
adults, at all levels of fitness



designed for all mouth shapes


TrueFlow
makes the difference

Positioning of teeth

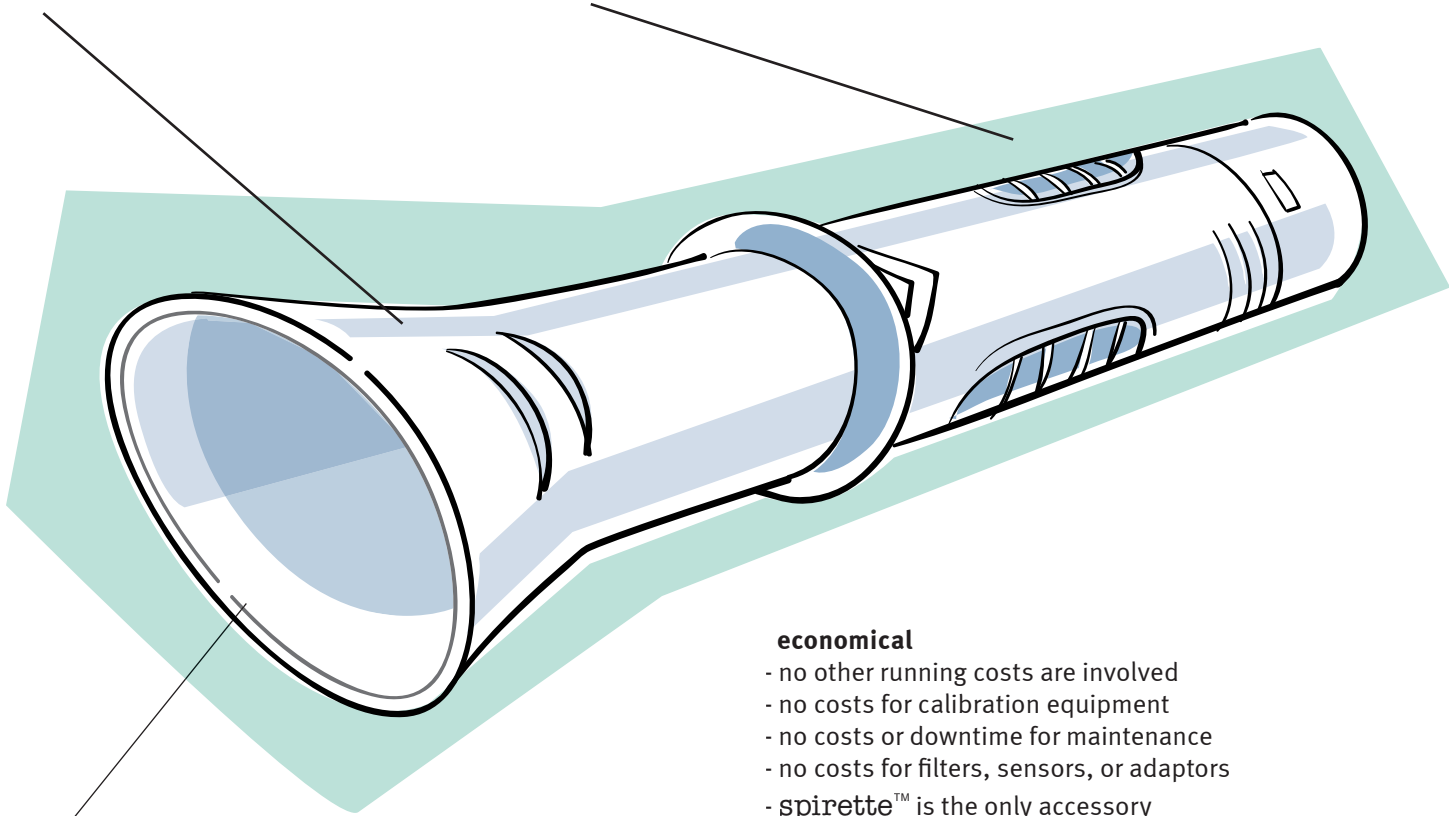
- keeps spirette™ securely in place

Tight lip seal

- prevents leaks

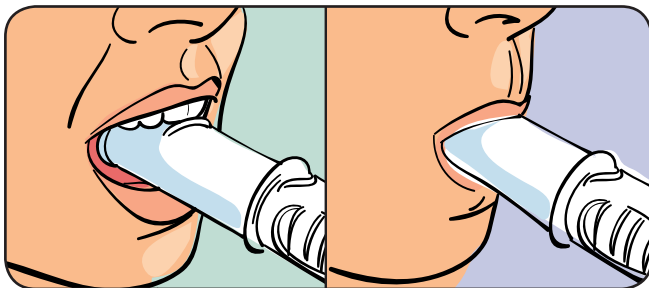
Filter membrane

- bacteria filter membrane built into each spirette™
- prevents cross contamination



Mouthpiece

- smooth non-stick polyethylene for patients comfort
- shaped oval for optimal lip seal and teeth positioning
- conical to suit different mouth sizes



economical

- no other running costs are involved
- no costs for calibration equipment
- no costs or downtime for maintenance
- no costs for filters, sensors, or adaptors
- spirette™ is the only accessory

simple and “foolproof”

- just insert spirette™, ready for measurement (no bar code, no input of numbers)
- the TrueFlow instrument guides you through the process of spirometry

maintenance free

- no maintenance whatsoever is needed with spirette™ and TrueFlow instruments
- no calibration or checking procedures are required

hygienic

- the safest respiratory flow measurement system available

environmentally safe

- lightweight PE, environmentally friendly, disposable and bio-degradable

